

# CLARK INTERNATIONAL AIRPORT PROJECT

## Monthly Progress Report

July 2019



### 9. Progress Photographs

Figure 1: Construction of a New Passenger Terminal Building Project.



Figure 2: Building 1 – West Pier Roof Structure installation substantially completed.



# CLARK INTERNATIONAL AIRPORT PROJECT

## Monthly Progress Report

July 2019



Figure 3: Roof Sheeting Final Layer – Riverclack installation in Building 1(a) – West Pier.



Figure 4: Departure Level concrete placing substantially completed in Building 1.



# CLARK INTERNATIONAL AIRPORT PROJECT

## Monthly Progress Report

July 2019



Figure 5: Mezzanine Level concrete placing completed in Building 1 – West Pier.



Figure 6: Installation of steel decking and Girder installation substantially completed in Elevated Road.



# CLARK INTERNATIONAL AIRPORT PROJECT

## Monthly Progress Report

July 2019



Figure 7: Arrival level construction in GL 7-12 in Building 2 – East Pier.



Figure 8: High/Roof column construction in Building 2 – East Pier.



Figure 9: High Column/Beams/Slab construction and PC Wall Panel(Perimeter) installation in B3– South.



# CLARK INTERNATIONAL AIRPORT PROJECT

## Monthly Progress Report

July 2019



Figure 10: Arrival/Departure/Roof construction in 3A/3B/3C of Building 3 – South Pier.



Figure 11: PC Wall Panel(Perimeter) and CMU installation in Building 4 – North Pier.



Figure 12: Structural Completion on Arrival/Departure/Roof Level in B4 – North Pier Building.



# CLARK INTERNATIONAL AIRPORT PROJECT

## Monthly Progress Report

July 2019



Figure 13: Mezzanine Level structural completion in Building 1.



Figure 14: Façade Steel installation in GL 42 in Building 1 – West Pier.



# CLARK INTERNATIONAL AIRPORT PROJECT

Monthly Progress Report

July 2019



Figure 15: Precast Concrete Wall Panel installation in GL L-N along GL 31 & 32 in Building 3.



Figure 16: Arrival Level Beams and Slab construction in Building 3C – South Pier.



# CLARK INTERNATIONAL AIRPORT PROJECT

Monthly Progress Report

July 2019



Figure 17: Fabrication and installation of Fixed Link Bridge (FLB – 13) in Building 4.



Figure 18: Elevated Road steel decking installation and corbel construction.





# CLARK INTERNATIONAL AIRPORT PROJECT

## Monthly Progress Report

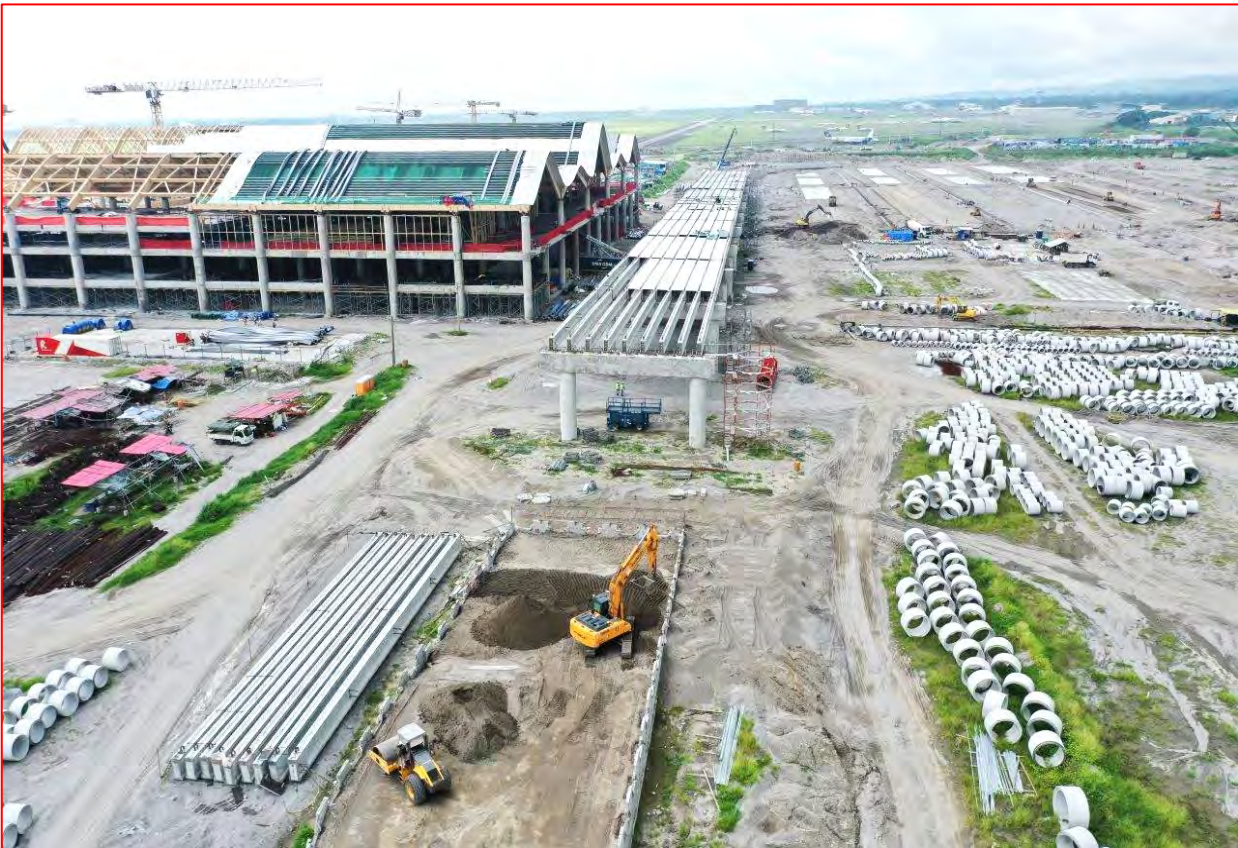
July 2019



Figure 19: Abutment A – MSE Wall installation in Elevated Road.



Figure 20: Abutment B – MSE Wall installation in Elevated Road.



# CLARK INTERNATIONAL AIRPORT PROJECT

## Monthly Progress Report

July 2019



Figure 21: Rotary 2 construction in Main Access Road.



Figure 22: Asphalt laying and compaction in Main Access Road.



# CLARK INTERNATIONAL AIRPORT PROJECT

## Monthly Progress Report

July 2019



Figure 23: Asphalt laying and compaction in Link Road from Prince Balagtas to Gil Puyat.



Figure 24: Civil/ Structural Substructure Construction of Dolores Bridge



# CLARK INTERNATIONAL AIRPORT PROJECT

## Monthly Progress Report

July 2019



Figure 25: Creek Diversion and Car Park construction in Landside.



Figure 26: Concrete Masonry Unit(CMU) and Beam Sample testing.

