

MUNTINLUPA-CAVITE EXPRESSWAY

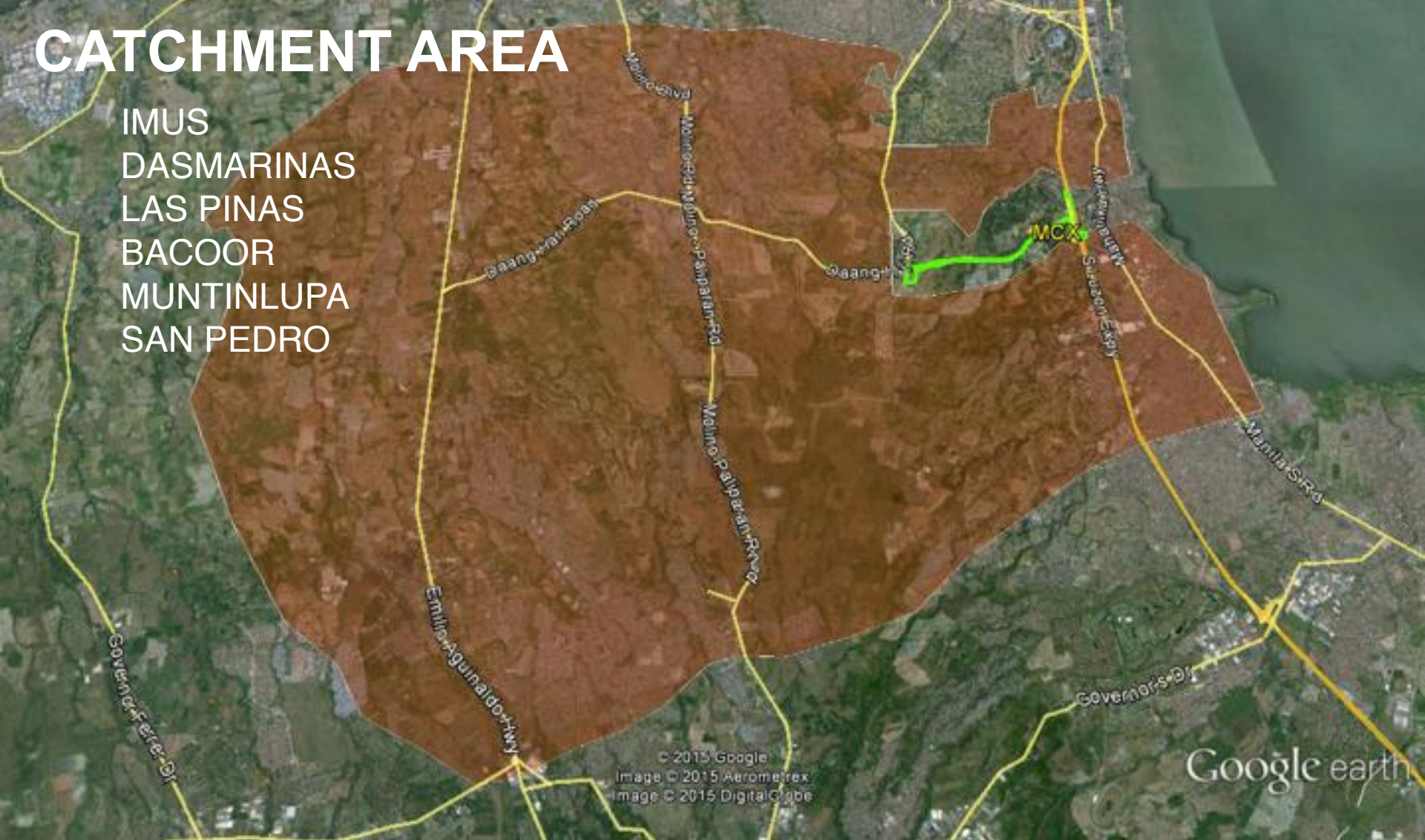
PROJECT BRIEFING

July 24, 2015



CATCHMENT AREA

IMUS
DASMARINAS
LAS PINAS
BACOR
MUNTINLUPA
SAN PEDRO



- ▶ Catchment area population of 3.0 Million
- ▶ Population growth rate: 3.3%
- ▶ Estimate of 25,000 vehicles/day



TRAFFIC SITUATION

▶ 1.3KM build up at peak hour

Estimated impact:

- Fuel burned in traffic - 10M liters/year
- Man-hours lost in traffic – 23M

MCX BY THE NUMBERS



1. 1st integrated toll collection system between concessionaires outside of the PNCC franchise
2. 2 km. shorter distance if travelling south
3. 3 km. shorter if travelling north
4. MCX is a 4km. 4 lane paved toll road
5. Cuts travel time from Daang Hari to SLEX to 45 minutes (via Alabang)

Benefits of MCX

- ▶ **Policy Benefit:**
MCX-SLEX interoperability is a pilot for seamless toll collection
- ▶ **Peso Benefit (annual estimate):**
Fuel saved - Php400M
Man-hour - Php 1.3B
- ▶ **Social Benefit:**
Residents of Muntinlupa and Cavite
have more quality time to spend at home or at work
Toll fee of P17 (Class 1) vs travel time saved of 45 minutes



MUNTINLUPA-CAVITE EXPRESSWAY

PROJECT BRIEFING

July 24, 2015

